

Adding YSSN Icon on your desktop

Don't log into Checkpoint...no longer needed

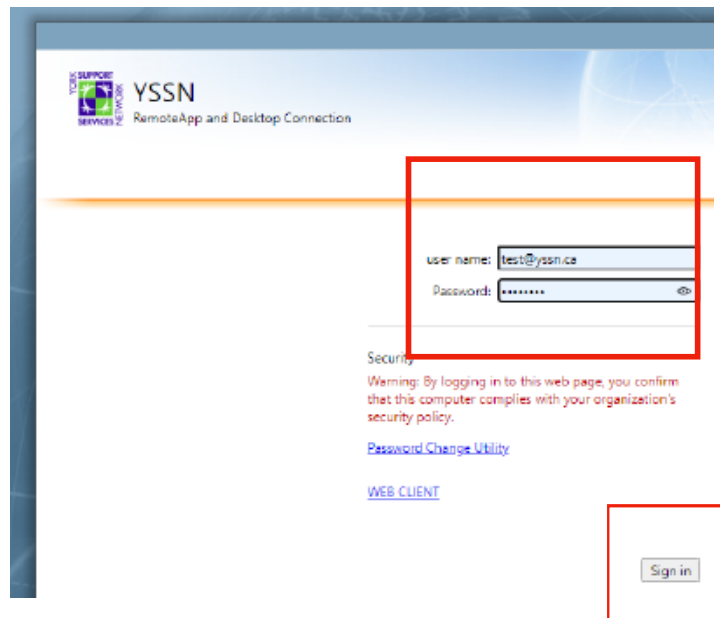
Delete the YSSN icon on your desktop



Right click icon click delete

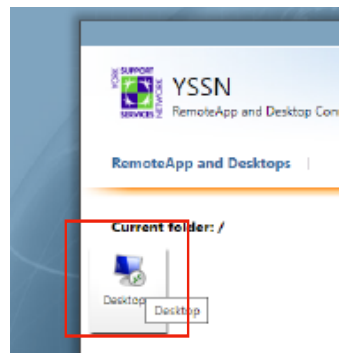
Using your browser login to [HTTPS://VDI.YSSN.CA](https://vdi.yssn.ca)

Using your Email address and Password please sign in

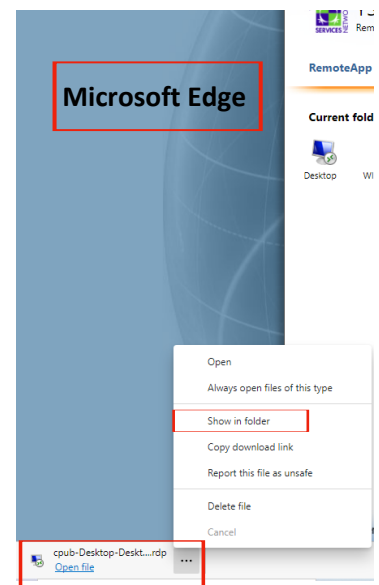
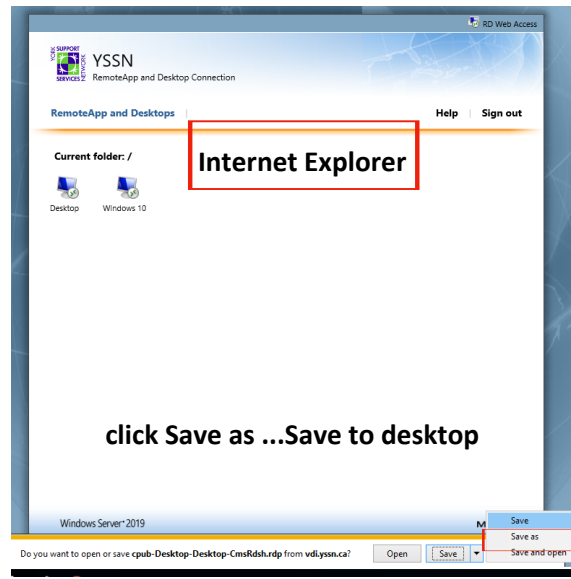
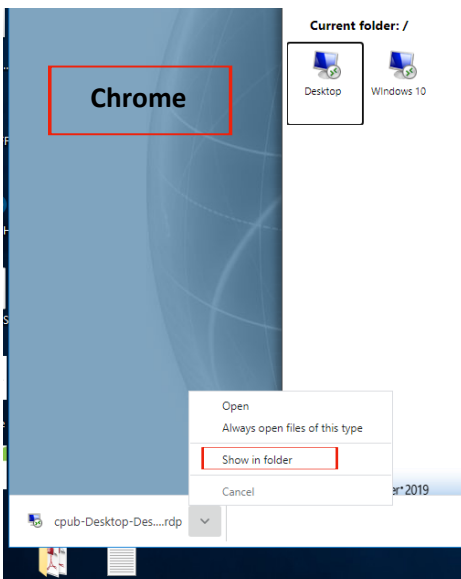


Click the Desktop Icon

It will prepare to download

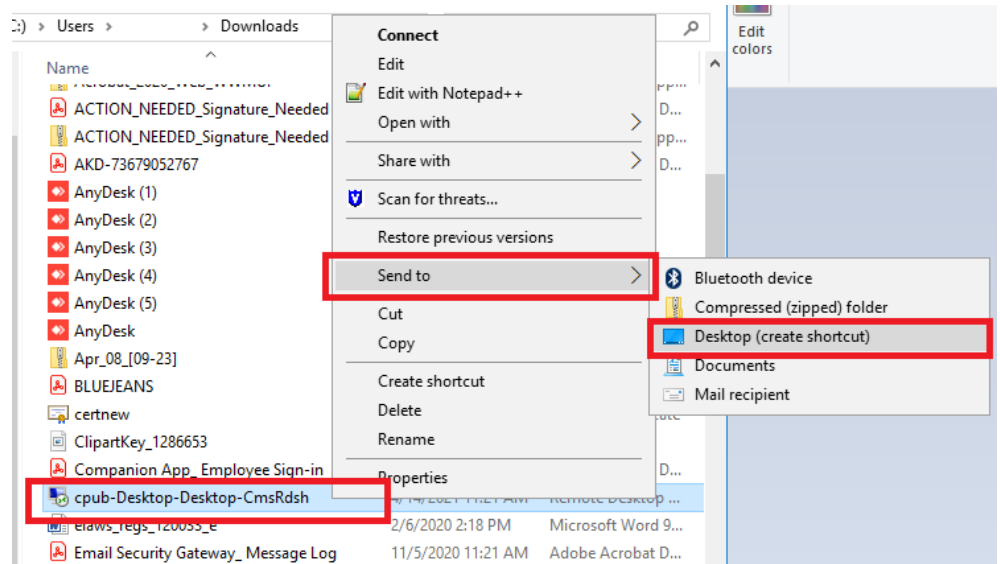


See instructions below for the browser you opened with.



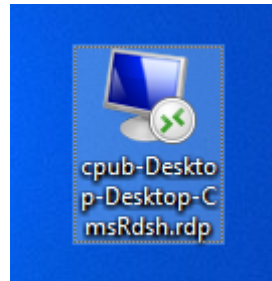
If you used Chrome or Microsoft Edge

Click on show in folder

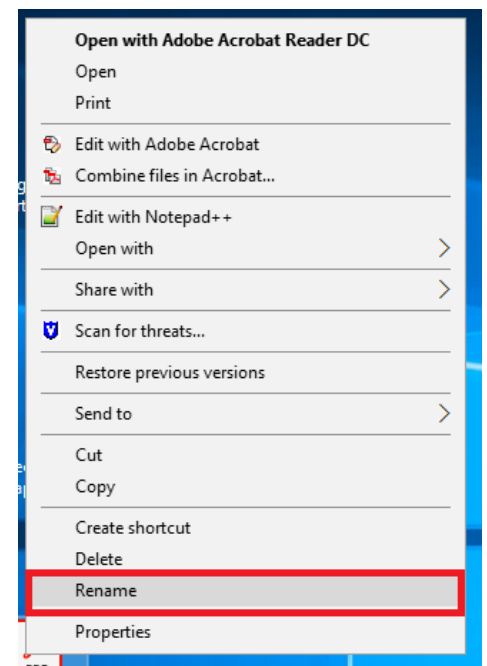


Right click file

Once done you'll see this icon on your desktop



Right click the icon

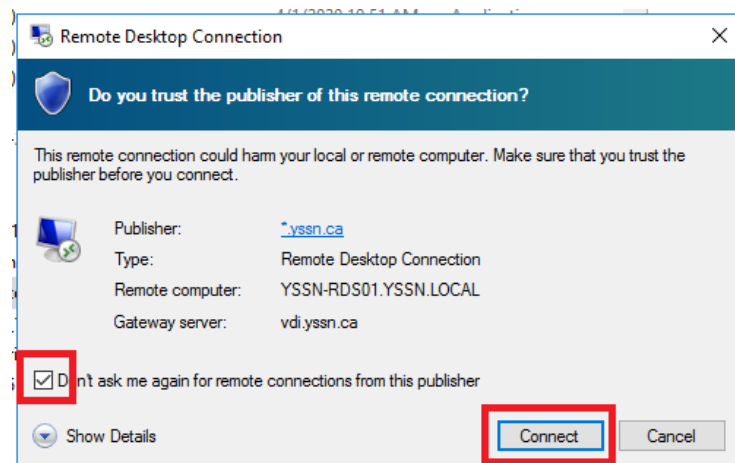


Rename to YSSN

From the Desktop double click the RDP file and proceed to login

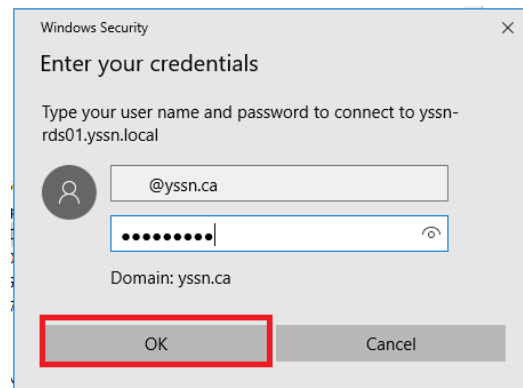


check off box then click connect

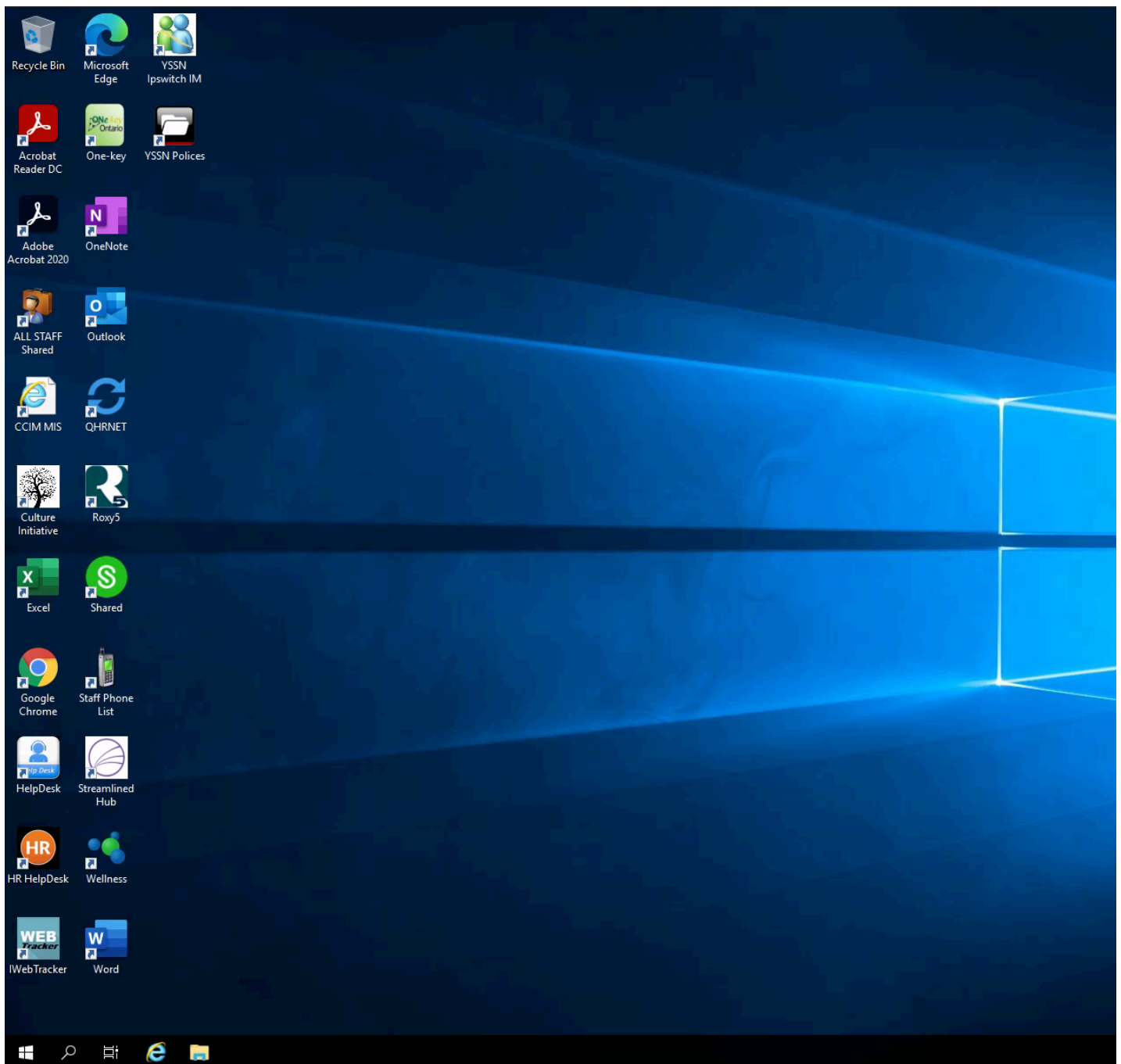


Login using your email address and password.

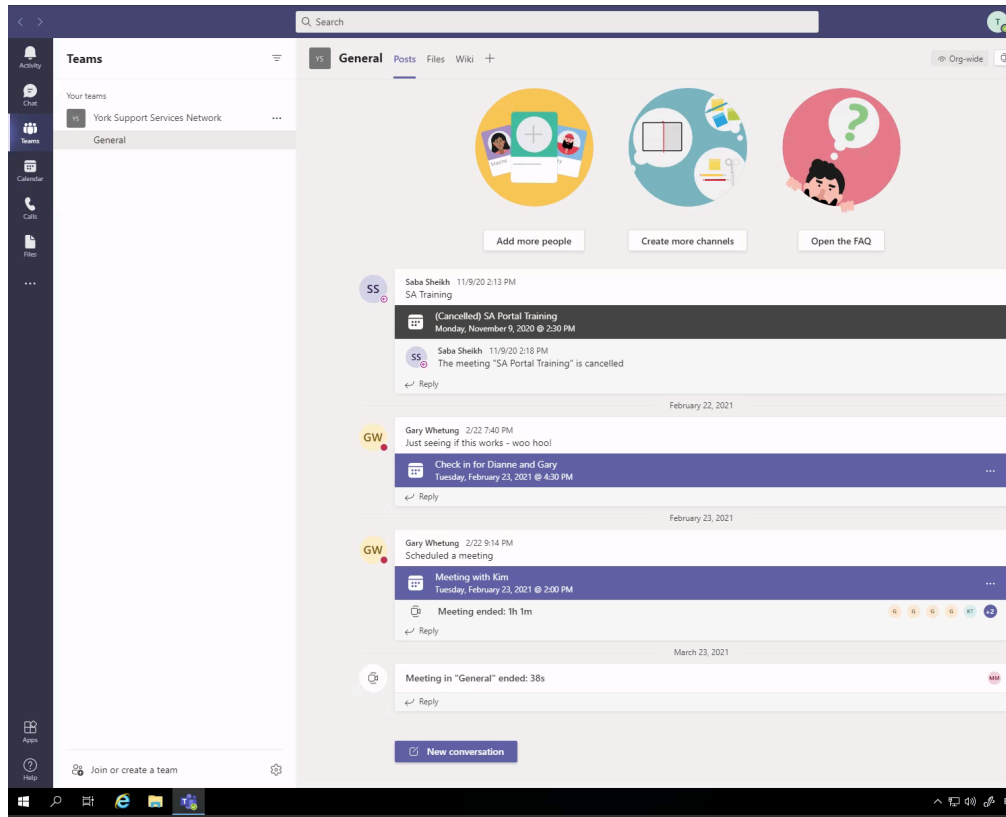
Please have your Microsoft Authenticator APP ready to proceed and APPROVE login.



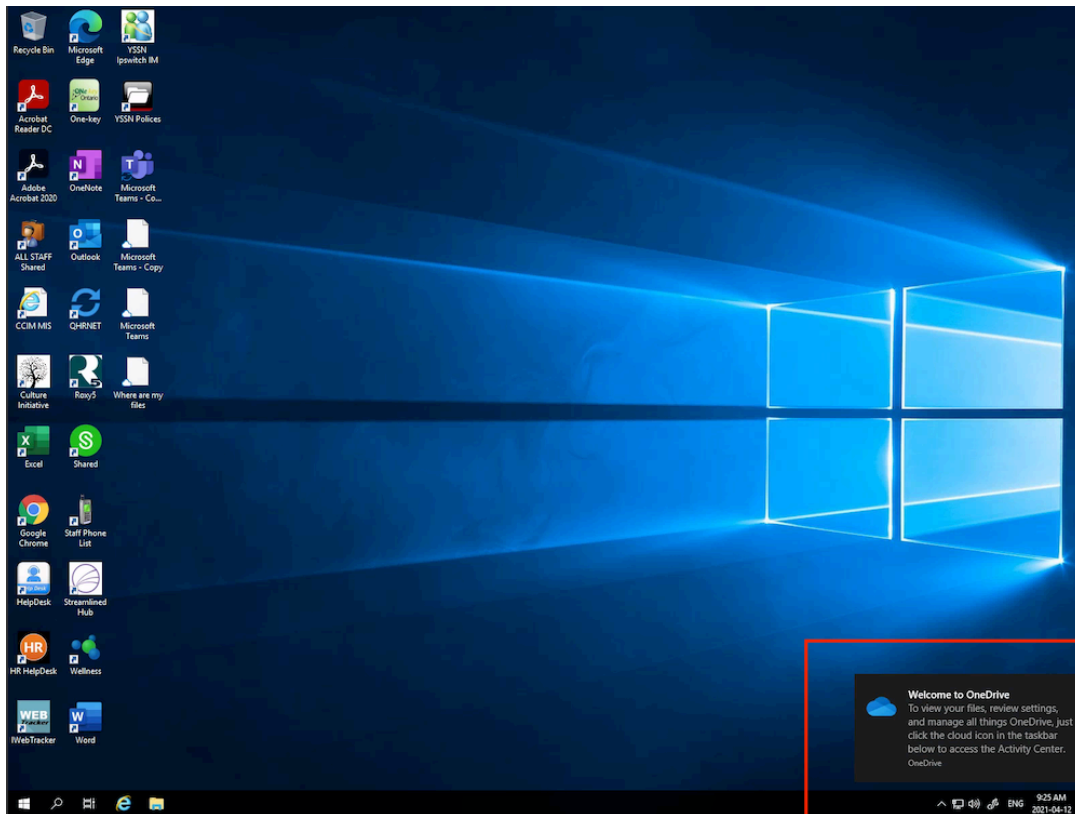
The Desktop will take some time to load 1-2 minutes



Microsoft teams will automatically load this can be minimized



Onedrive will Automatically start and your desktop icons will begin to appear in 2-4 minutes.



Once your desktop starts showing your icons you are able to open your programs.
IP Switch will not open automatically anymore you have to open daily..